

THE ATTWOOD

a beautiful 2 bedroomed home

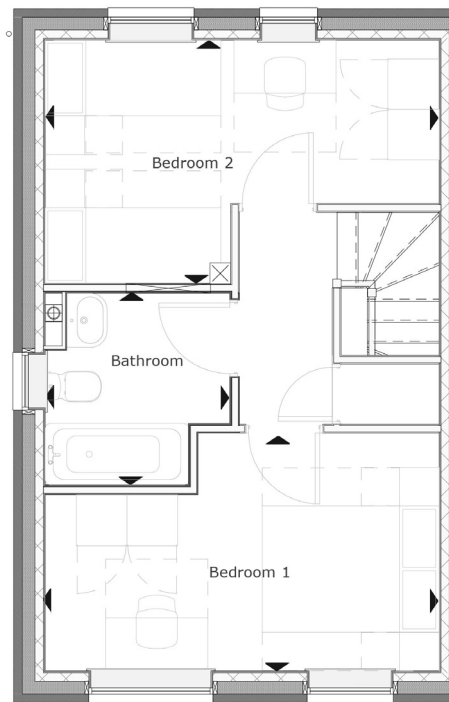
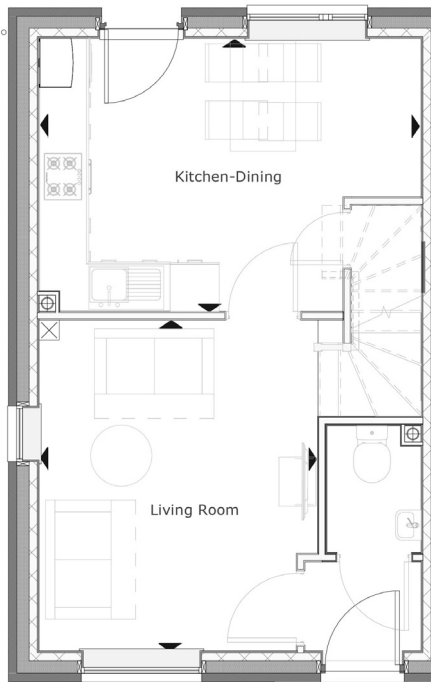


The Attwood is a beautiful two-bedroom home. Along with parking provision, this property benefits from a downstairs WC a separate living room and open plan kitchen/dining room with access to the rear garden.

The first floor consists of two bedrooms and a family bathroom.

THE ATTWOOD

2 BEDROOM HOUSE



Ground Floor

Room dimensions

Living	3.17m x 4.05m 10'5" x 13'3"
Kitchen/Dining	4.66m x 3.34m 15'3" x 10'11"

First Floor

Room dimensions

Bedroom 1	4.66m x 2.82m 15'3" x 9'3"
Bedroom 2	4.66m x 2.90m 15'3" x 9'3"

Specifications: This information is for guidance only and does not form any part of a contract or constitute a warranty.

Illustrations are of typical elevations and may vary. Floor plan are not drawn to scale.

Room dimensions are subject to a +/- 50mm(2") tolerance and are based on a maximum dimensions in each room.

Please consult your sales advisor on site for specific elevations, room dimensions and external finishes.